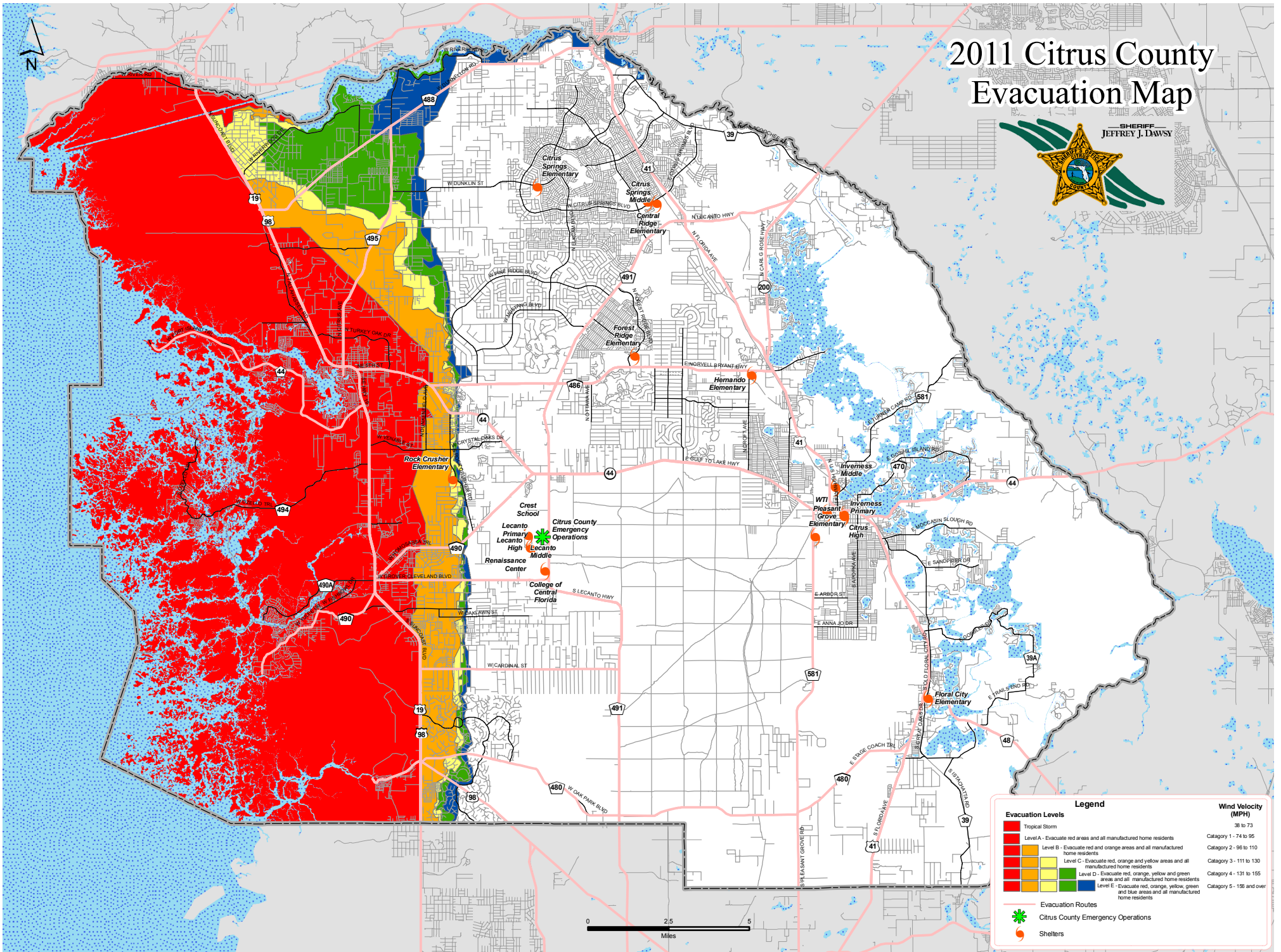


2011 Citrus County Evacuation Map



Evacuation Levels		Wind Velocity (MPH)
■	Tropical Storm	38 to 73
■	Level A - Evacuate red areas and all manufactured home residents	Category 1 - 74 to 95
■	Level B - Evacuate red and orange areas and all manufactured home residents	Category 2 - 96 to 110
■	Level C - Evacuate red, orange and yellow areas and all manufactured home residents	Category 3 - 111 to 130
■	Level D - Evacuate red, orange, yellow and green areas and all manufactured home residents	Category 4 - 131 to 155
■	Level E - Evacuate red, orange, yellow, green and blue areas and all manufactured home residents	Category 5 - 156 and over

Legend	
—	Evacuation Routes
★	Citrus County Emergency Operations
○	Shelters